

**Variants of design:**

additional opening S1,S2  
(e.g. for grease duct)

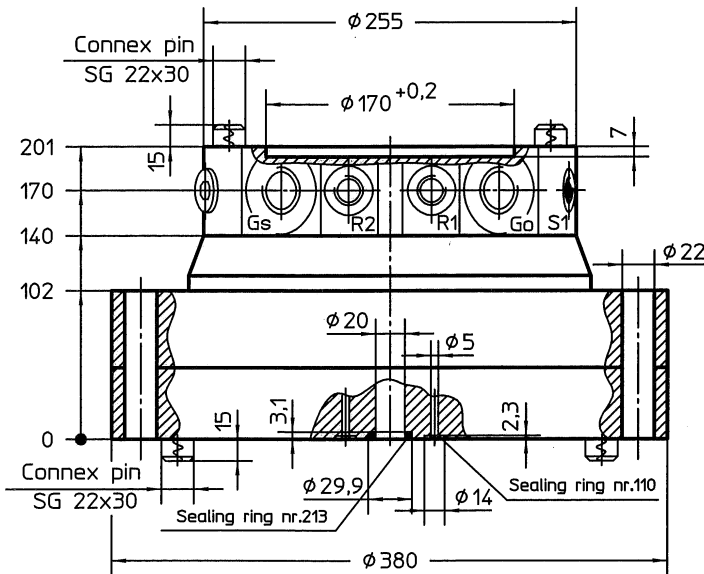
**Machine:**

e.g.hydraulic excavator service weight:  
max. 28ts. with floating attachment  
max. 20ts. with rigid attachment

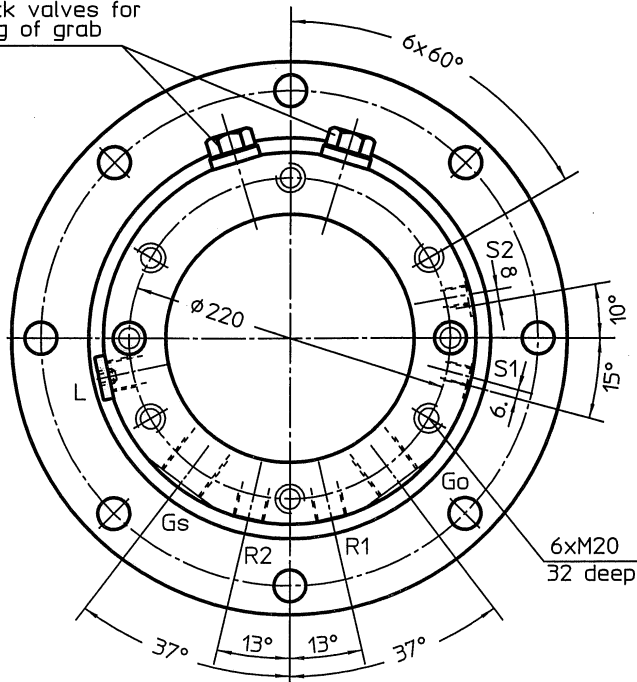
**Add-on units:**

Clamshell buckets of max. 1,8m<sup>3</sup>  
Grapples of max. 0,7m<sup>3</sup>

Sorting units ( please ask manufacturer)



Schack valves for turning of grab








**Technical details:**

max. thrust load = 140KN  
max. radial load = 100KN  
Pmax. grab = 35MPa  
Pmax. 3rd opening S1 = 10MPa  
Pmax. rotating engine = 20MPa  
Torque / 1MPa = 200Nm  
Absorption volume = 1800cm<sup>3</sup>  
min. oil passage Gs/Go = NW12  
min. oil passage S1 = NW5  
Mass = 115kg  
max. rotations = 30rpm  
max.transverse moment: refer to 4.713.00

**Volume of delivery:**

2 sealing ring nr. 110  
2 sealing ring nr. 213  
4 Connex pin SG 22x30

**Connections:**

R1,R2: turn rotator  G 1/2"  
Go: open grab  G 1"  
Gs: close grab  G 1"  
L: Measuring conn.  G 1/2"  
S1,S2: 3rd,4rd opening  G 1/4"

oil distributor flange dimension Ö 3-2S

**Edition 044 a Gm.**

Paint: black primary coat  
Reserve made to modifications  
All rights reserved